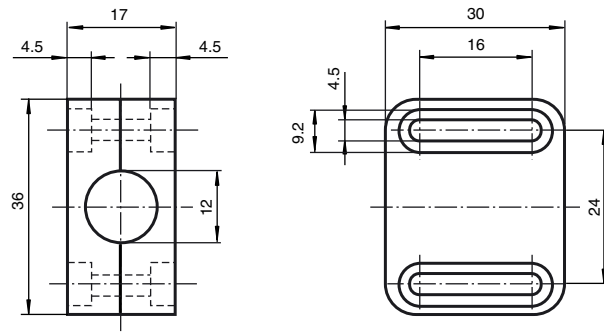




Dimensions



Model Number

BF 12
Mounting flange, 12 mm

Features

- Retainer for all cylindrical sensors with M12 thread
- Simple installation and exact setting
- Large sensing range (max. 11 mm)

Technical data

General specifications	
Inside diameter	12 mm
Ambient conditions	
Ambient temperature	-25 ... 85 °C (-13 ... 185 °F)
Mechanical specifications	
Material	Base: Crastin/PBT (green) Upper section: PA (transparent)
Tightening torque, fastening screws	≤ 1 Nm
Dimensions	30 mm x 36 mm x 17 mm

Release date: 2013-12-09 10:12 Date of issue: 2013-12-09 000049_eng.xml

Refer to "General Notes Relating to Pepperl+Fuchs Product Information".

Pepperl+Fuchs Group
www.pepperl-fuchs.com

USA: +1 330 486 0001
fa-info@us.pepperl-fuchs.com

Germany: +49 621 776 4411
fa-info@de.pepperl-fuchs.com

Singapore: +65 6779 9091
fa-info@sg.pepperl-fuchs.com